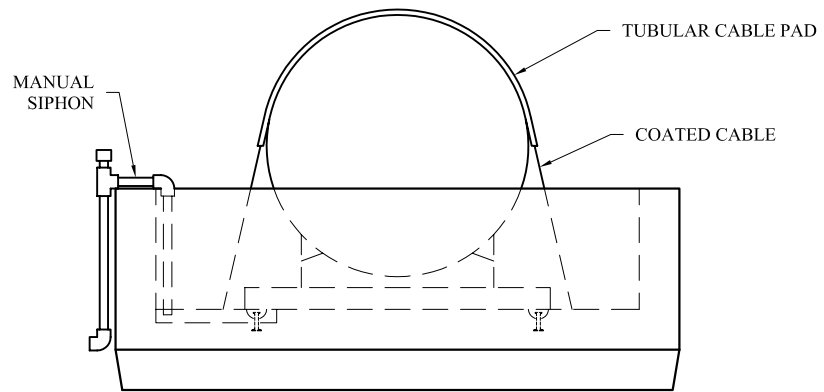
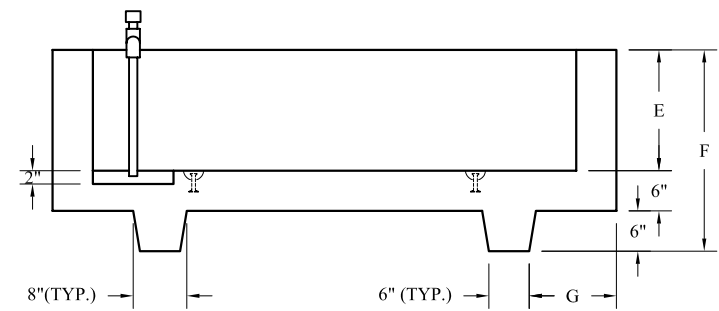


PLAN VIEW



SIDE VIEW



SECTION A-A

GENERAL NOTES:

1. CONCRETE: 5000 PSI @ 28 DAYS, AIR 6% ± 2%.
2. REINFORCING: GRADE 40, #4 BARS @ 12" O.C.E.W.
3. MANUAL SIPHON INCLUDED.
4. MINIMUM CAPACITY 125% OF STORED FUEL.
5. PLASTIC COATED CABLE PROVIDED FOR TANK HOLD DOWN.

| SIZE (GAL.) | TOTAL (GAL.) CONTAINMENT | A | B | C | D | E | F | G | WEIGHT |
|-------------|--------------------------|--------|-------|--------|-------|-----|-----|-----|-------------|
| 300 | 404 | 6'-0" | 6'-0" | 7'-0" | 7'-0" | 18" | 30" | 12" | 7,190 LBS. |
| 520 | 657 | 8'-0" | 6'-0" | 9'-0" | 7'-0" | 22" | 34" | 24" | 9,435 LBS. |
| 1,000 | 1,346 | 12'-0" | 6'-0" | 13'-0" | 7'-0" | 30" | 42" | 36" | 14,540 LBS. |
| 1,500 | 1,930 | 12'-0" | 6'-0" | 13'-0" | 7'-0" | 43" | 55" | 36" | 17,620 LBS. |
| 2,000 | 2,615 | 14'-0" | 7'-6" | 15'-0" | 8'-6" | 40" | 52" | 42" | 21,495 LBS. |

NCI
 Norwalk Concrete Industries
 80 Commerce Drive
 Norwalk, Ohio 44857
 www.nciprecast.com

Toll Free 800.733.3624
 Phone 419.668.8167
 Fax 419.663.0627

FUEL CONTAINMENT STRUCTURES

| REVISIONS: | DWG. NO. | DATE | SHT. - |
|------------|-------------|----------|--------|
| 09-11-06 | FCS-0001-02 | 01-11-02 | OF - |
| | | | JDH |