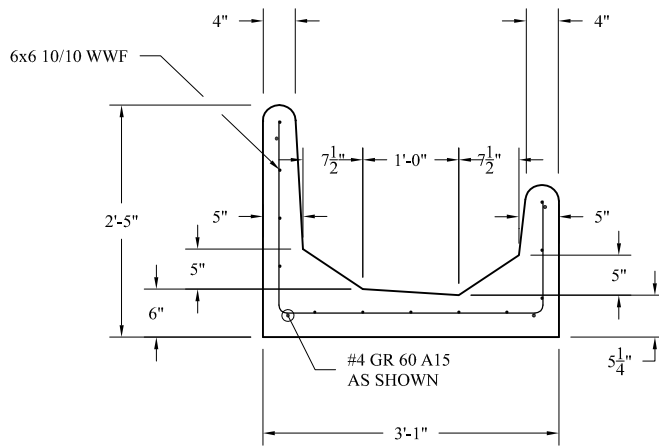


PLAN VIEW



SECTION A-A

GENERAL NOTES:

1. CONCRETE: 5,000 PSI @ 28 DAYS. 6% AIR.
2. BUTT JOINT.
3. CASTING WEIGHT 3,570 LBS.

NCI

Norwalk Concrete Industries

80 Commerce Drive
Norwalk, Ohio 44857
www.nciprecast.com

Toll Free 800.733.3624
Phone 419.668.8167
Fax 419.663.0627

J FENCE BUNK

REVISIONS:	DWG:	DATE:	SHT. -
	F-0001-14	03.17.14	OF -
			JRB